

Safety of Alemtuzumab and Autologous Hematopoietic Stem Cell Transplantation Compared to Noninduction Therapies for Multiple Sclerosis

Peter Alping, MD, Joachim Burman, MD, Jan Lycke, MD, Thomas Frisell, PhD, and Fredrik Piehl, MD

Neurology® 2021;96:e1574-e1584. doi:10.1212/WNL.00000000000011545

Correspondence

Dr. Alping
peter.alping@ki.se

MORE ONLINE

→ Class of Evidence

Criteria for rating therapeutic and diagnostic studies

[NPub.org/coe](https://www.npub.org/coe)

Abstract

Objective

To assess safety outcomes for the induction therapies alemtuzumab and autologous hematopoietic stem cell transplantation (AHSCT) compared to noninduction disease-modifying therapies.

Methods

We performed a population-based cohort study linking the Swedish Multiple Sclerosis Register to national health care registers. Alemtuzumab, AHSCT, and a matched reference group of noninduction therapies (natalizumab, dimethyl fumarate, rituximab, fingolimod) were included if started between 2008 and 2017. Main outcomes were death, thyroid disease, nonthyroid autoimmune disease, and infection.

Results

We identified 132 alemtuzumab-treated and 139 AHSCT-treated (68% high-dose cyclophosphamide and anti-thymocyte globulin [ATG], 32% BCNU, etoposide, cytosine-arabioside, and melphalan/ATG) patients, together with 2,486 matched patients treated with noninduction therapies. Four patients in the alemtuzumab group died (incidence rate [IR] per 1,000 person-years 8.6, 95% confidence interval [CI] 2.3–22.0) compared to 1 patient in the AHSCT group (IR 1.7, 95% CI 0.0–9.6), and the mortality rate in the reference group was 0.7 (95% CI 0.3–1.3). Thyroid disease was most frequent in the alemtuzumab group (IR 109, 95% CI 75–154) but also occurred more often for AHSCT (IR 34, 95% CI 18–56) compared to the reference (IR 5.3, 95% CI 3.9–7.1). The incidence of nonthyroid autoimmune disease was similar in all groups. IR for infection diagnosed ≥ 6 months from therapy initiation was 53 (95% CI 30–87) for alemtuzumab, 108 (95% CI 75–150) for AHSCT, and 51 (95% CI 46–57) for the reference.

Conclusion

We confirmed a high incidence of thyroid disease in alemtuzumab- and, to a smaller extent, AHSCT-treated patients and found a higher incidence of infection for AHSCT compared to both alemtuzumab and noninduction therapies. The incidence of nonthyroid autoimmune disease was low for both therapies.

Classification of Evidence

This study provides Class III evidence of an increased risk of thyroid disease with alemtuzumab and an increased risk of infection with AHSCT treatment.

From the Department of Clinical Neuroscience (P.A., F.P.) and Clinical Epidemiology Division (P.A., T.F.), Department of Medicine Solna, Karolinska Institutet, Stockholm; Department of Neuroscience (J.B.), Uppsala University; Department of Clinical Neuroscience (J.L.), Institute of Neuroscience and Physiology, University of Gothenburg; and Academic Specialist Centre (F.P.), Stockholm Health Services, Sweden.

Go to [Neurology.org/N](https://www.neurology.org/N) for full disclosures. Funding information and disclosures deemed relevant by the authors, if any, are provided at the end of the article.

This is an open access article distributed under the terms of the Creative Commons Attribution License 4.0 (CC BY), which permits unrestricted use, distribution, and reproduction in any medium, provided the original work is properly cited.

Glossary

AHSCT = autologous hematopoietic stem cell transplantation; **ATC** = Anatomical Therapeutic Chemical Classification System; **ATG** = anti-thymocyte globulin; **BEAM** = BCNU, etoposide, cytosine-arabioside, and melphalan; **CARE-MS** = Comparison of Alemtuzumab and Rebif Efficacy in Multiple Sclerosis; **CI** = confidence interval; **DMT** = disease-modifying therapy; **EDSS** = Expanded Disability Status Scale; **HSC** = hematopoietic stem cell; **ICD** = *International Classification of Diseases*; **IR** = incidence rate; **MS** = multiple sclerosis; **MSIS-29** = Multiple Sclerosis Impact Scale; **RRMS** = relapsing-remitting MS; **SDMT** = Symbol Digit Modalities Test.

Disease-modifying therapies (DMTs) for multiple sclerosis (MS) can be classified by type of administration: repeated administration vs induction-type therapies that cause long-term cessation of MS-associated inflammation. Alemtuzumab was the first induction-type therapy to be approved for relapsing-remitting MS (RRMS); it was approved in 2013 by the European Medicines Agency and 2014 by the US Food and Drug Administration. Autologous hematopoietic stem cell transplantation (AHSCT) is another induction-type medical procedure that has been used to treat MS since 1995¹ and was approved for use in active RRMS in Sweden in 2016.

Alemtuzumab is a humanized monoclonal antibody that induces depletion and subsequent repopulation of CD52+ immune cell populations, leading to long-lasting changes to adaptive immunity.² It is administered as daily 12-mg IV infusions over 5 days, with 3 additional infusions after 1 year and further cycles as needed.

The AHSCT procedure consists of hematopoietic stem cell (HSC) mobilization, HSC harvesting, conditioning, and HSC transplantation.³ The 2 main conditioning regimens are high-dose cyclophosphamide (Cy) and anti-thymocyte globulin (Cy/ATG) or a combination of 4 cytostatic agents (BCNU, etoposide, cytosine-arabioside, and melphalan; BEAM) and ATG.

In Sweden, alemtuzumab and AHSCT have been used primarily for aggressive RRMS or breakthrough inflammation on conventional therapies. Preference for either therapy has been driven mainly by local experience and availability. Widespread use of these therapies has been limited by concerns and uncertainty concerning their respective safety profiles in relation to other MS therapies.

The aim of this study was to describe safety outcomes after treatment with alemtuzumab and AHSCT compared to noninduction therapies.

Methods

We performed a nationwide register-based cohort study of alemtuzumab and AHSCT compared to matched noninduction therapies, linking data from the Swedish MS register to national health care and demographic registers.

Data Sources

The nationwide Swedish MS register captures data on several aspects of MS care⁴ and has especially high validity for therapy data.⁵ Participation is voluntary, but coverage has been estimated to be >80%.⁶ The MS register was linked to several national registers with compulsory participation: the cause of death register, the patient register (all visits to inpatient and specialized outpatient care and their associated diagnosis codes, with high validity),⁷ the prescribed drug register (complete data on all prescription drugs collected at pharmacies),⁸ the cancer register,⁹ demographic registers, and registers with data on sick leave and disability pension. The end of data collection differed between the registers; the MS, cause of death, and prescribed drug registers had data until September 30, 2018, and the patient and the cancer registers had data until December 31, 2017.

Exposure Definition

We included all first-ever treatments with alemtuzumab and AHSCT, as well as a reference group of 4 noninduction therapies, registered in the MS register and started between January 1, 2008, and December 31, 2017. The noninduction therapies comprised rituximab, fingolimod, natalizumab, and dimethyl fumarate, the 4 most frequently used MS DMTs in Sweden. AHSCT treatments were grouped according to the conditioning regimen used, Cy/ATG or BEAM/ATG. Previous treatment with alemtuzumab or AHSCT was not allowed, and patients were censored on death, emigration, or start of a subsequent treatment with alemtuzumab or AHSCT or at end of data collection, whichever happened first. Patients were excluded if they were <15 years of age at therapy start.

Outcome Definition and Baseline Variables

Primary outcomes were death, thyroid disease, nonthyroid autoimmune disease, and infection. Deaths were gathered primarily from the cause of death register, but the cause was not available for all observations (due to registry-entry delay), and supplementary information reported directly to the Swedish Medical Products Agency was used in these cases. Thyroid disease, nonthyroid autoimmune disease, and infections were identified by ICD codes (table 1) from the primary and secondary diagnoses of the inpatient and specialized outpatient visits in the patient register. For thyroid disease and nonthyroid autoimmune disease, only the first-ever event was included, and if this event happened before therapy start, the patient was censored. To also catch thyroid disease treated in primary care, thyroid hormone prescriptions were

Table 1 Definitions of Outcomes Based on ICD-10 and ATC Codes

Register/Outcome	Codes
Patient register	ICD-10
Any infection	A (00–32 34–49 51–99)
	B (00–99)
	D (733)
	E (321)
	G (00–02 042 05–07)
	H (000 440 600–603 66 67 70)
	I (301 400)
	J (00–22 32 340 36 390 391 440 85 86)
	K (044 046 047 102 113 122 140 570 572 574 578 61 630 650–652 659)
	L (00–08 303)
	M (00 01 462–465 600 650 710 711 726 86)
	N (136 151 159 300 308 340 412 431 452–454 482 61 70 73 751)
Thyroid disease	C (73)
	D (34 44)
	E (03–07 890)
Nonthyroid autoimmune disease	D (590 591 690 693 860–863 868 869)
	E (10 271 272)
	G (36 610 611 618 619 70)
	I (00 010–012 018–020 029 730 731)
	K (50 51 743 900)
	L (100 102 109 12 13 400–405 408 409 80 940 941)
	M (023 028 029 050–053 058–064 068 069 080–084 088–092 098 300–303 308 310 313–316 321 328–332 339–342 348–353 45)
Varicella zoster	B (02)
Aplastic anemia	D (60–64)
Thrombocytopenia	D (693–696)
Agranulocytosis	D (70)
Major acute cardiovascular event	I (200 21 60–64)
Female reproductive	E (28 894)
	N (91 92 944–949 95 97)
Male reproductive	E (29)
	N (46)

Table 1 Definitions of Outcomes Based on ICD-10 and ATC Codes (*continued*)

Register/Outcome	Codes
Prescribed drug register	ATC
Thyroid hormone	H03AA
Systemic antibiotics	J01
Herpes antivirals	D06BB (03 53)
	J05AB (01 09 11)
	S01AD (03)

Abbreviations: ICD-10 = *International Classification of Disease, revision 10*, collected from the patient register; ATC = Anatomical Therapeutic Chemical Classification System, collected from the prescribed drug register. All registered diagnosis codes were used, and an ICD or ATC code was identified if it started with any of the specified strings.

identified by Anatomical Therapeutic Chemical Classification System (ATC) codes from the prescribed drug register (table 1). Several other outcomes were also investigated according to what had been previously reported: cancer, blood cell disorders (aplastic anemia, thrombocytopenia, agranulocytosis), disorders of the reproductive organs and fertility, and starting a new MS DMT. The outcomes were identified through their respective registers (ICD and ATC-based definitions in table 1). For ATC-based outcomes, a drug was considered a new treatment and included only if there had been no registration of that particular drug in the previous 180 days. The baseline variables age, sex, birthplace, year, region, and MS type/onset/duration were assessed at therapy start. Education level, therapy count, thyroid disease, and nonthyroid autoimmune disease were measured from start of follow-up until start of therapy. Hospital days were counted from 5 years before until 1 month before therapy start. Disability pension and sick leave were counted in the year before therapy start. Expanded Disability Status Scale (EDSS) score was assessed 6 months before until 1 month after therapy start, and Symbol Digit Modalities Test (SDMT) and Multiple Sclerosis Impact Scale (MSIS-29) scores were obtained 3 months before until 1 month after therapy start.

Analysis

The main focus of this study was to provide descriptive statistics for each cohort, rather than adjusted tests of group differences, because of the low numbers of treated patients. Incidence rates (IRs) per 1,000 person-years with 95% confidence intervals (CIs) were calculated for all outcomes. Kaplan-Meier plots were produced for the outcomes first-ever thyroid disease and starting a new therapy. The monthly IRs 3 years before and after therapy start were plotted in 3-month intervals for infection and collection of prescription drugs. Similarly, the proportion of time spent in inpatient care was plotted for the same intervals. The noninduction reference group was matched 10:1 to the main exposure groups by age,

Table 2 Baseline Characteristics Before and Around Therapy Start

	Alemtuzumab	AHSCT Cy/ATG ^a	AHSCT BEAM/ATG ^a	Ref. DMTs (Unmatched) ^b	Ref. DMTs (Matched) ^c
No.	132	94	45	8,356	2,486
Age, mean (SD), y	35.0 (7.8)	32.4 (7.5)	34.6 (7.9)	40.5 (11.5)	33.9 (7.5)
Sex, female, n (%)	79 (59.8)	66 (70.2)	29 (64.4)	5,890 (70.5)	1,627 (65.4)
Place of birth, Nordic countries, n (%)	119 (90.2)	85 (90.4)	41 (91.1)	7,389 (88.5)	2,112 (85.0)
Education level, ≤9 y, n (%)	18 (13.7)	3 (3.2)	2 (4.5)	897 (10.9)	206 (8.5)
Education level, 10-12 y, n (%)	55 (42.0)	42 (45.2)	13 (29.5)	3,754 (45.7)	1,123 (46.4)
Education level, >12 y, n (%)	58 (44.3)	48 (51.6)	29 (65.9)	3,556 (43.3)	1,092 (45.1)
Hospital days, ^d 0 d, n (%)	41 (32.0)	15 (16.5)	4 (8.9)	3,748 (46.9)	1,016 (43.8)
Hospital days, ^d 1–10 d, n (%)	54 (42.2)	37 (40.7)	17 (37.8)	3,009 (37.6)	964 (41.5)
Hospital days, ^d ≥11 d, n (%)	33 (25.8)	39 (42.9)	24 (53.3)	1,239 (15.5)	341 (14.7)
Disability pension, with, n (%)	16 (12.2)	16 (17.0)	8 (18.2)	1,688 (20.3)	249 (10.1)
Sick leave, with, n (%)	48 (36.6)	41 (43.6)	26 (59.1)	2,263 (27.3)	625 (25.4)
Thyroid disease, n (%)	7 (5.3)	3 (3.2)	2 (4.4)	381 (4.6)	88 (3.5)
Nonthyroid autoimmune disease, n (%)	11 (8.3)	7 (7.4)	12 (26.7)	714 (8.5)	184 (7.4)
MS type, PPMS, n (%)	3 (2.3)	0 (0.0)	1 (2.3)	366 (4.4)	4 (0.2)
MS type, RRMS, n (%)	121 (91.7)	89 (94.7)	38 (86.4)	7,045 (85.1)	2,442 (98.2)
MS type, SPMS, n (%)	8 (6.1)	5 (5.3)	5 (11.4)	863 (10.4)	40 (1.6)
Age at MS onset, mean (SD), y	28.5 (7.9)	24.9 (6.2)	27.3 (7.1)	32.1 (10.1)	28.3 (7.2)
MS duration, mean (SD), y	6.5 (5.1)	7.3 (6.2)	7.3 (4.7)	8.3 (8.2)	5.6 (5.7)
Therapy count, 0, n (%)	20 (15.2)	5 (5.3)	5 (11.1)	3,211 (38.4)	1,082 (43.5)
Therapy count, 1, n (%)	33 (25.0)	30 (31.9)	6 (13.3)	4,968 (59.5)	1,369 (55.1)
Therapy count, ≥2, n (%)	79 (59.8)	59 (62.8)	34 (75.6)	177 (2.1)	35 (1.4)
EDSS score, mean (SD)	2.5 (1.8)	3.5 (1.6)	4.3 (1.5)	2.4 (1.8)	2.0 (1.5)
SDMT score, mean (SD)	59.6 (17.6)	55.3 (11.9)	54.2 (18.5)	50.1 (12.3)	52.6 (11.4)
MSIS-29 Physical score, mean (SD)	2.0 (0.9)	2.3 (1.1)	3.1 (0.6)	2.0 (0.9)	1.9 (0.9)
MSIS-29 Psychological score, mean (SD)	2.5 (1.1)	2.9 (1.0)	3.2 (0.7)	2.3 (1.0)	2.4 (1.0)
Region Norra, n (%)	27 (20.5)	4 (4.3)	0 (0.0)	1,291 (15.4)	268 (10.8)
Region Stockholm, n (%)	5 (3.8)	11 (11.7)	22 (48.9)	1,958 (23.4)	352 (14.2)
Region Sydöstra, n (%)	2 (1.5)	9 (9.6)	1 (2.2)	974 (11.7)	94 (3.8)
Region Södra, n (%)	17 (12.9)	16 (17.0)	2 (4.4)	1,404 (16.8)	334 (13.4)
Region Uppsala-Örebro, n (%)	10 (7.6)	48 (51.1)	13 (28.9)	1,143 (13.7)	632 (25.4)
Region Västsvenska, n (%)	71 (53.8)	6 (6.4)	7 (15.6)	1,586 (19.0)	806 (32.4)

Abbreviations: AHSCT = autologous hematopoietic stem cell transplantation; ATG = anti-thymocyte globulin; BEAM = BCNU, etoposide, cytosine-rabioside, and melphalan; Cy = cyclophosphamide; DMT = disease-modifying therapy; EDSS = Expanded Disability Status Scale; MS = multiple sclerosis; MSIS-29 = Multiple Sclerosis Impact Scale; PPMS = primary progressive MS; Ref. = reference; RRMS = relapsing-remitting MS; SDMT = Symbol Digit Modalities Test; SPMS = secondary progressive MS.

^a Conditioning regimen: Cy/ATG and BEAM/ATG.

^b Reference noninduction therapy group comprising natalizumab, dimethyl fumarate, rituximab, and fingolimod.

^c The reference group matched 10:1 to the alemtuzumab and AHSCT groups on age, sex, and region.

^d Hospital days from 5 years before therapy start until 1 month before therapy start.

Table 3 Missing Data in Baseline Characteristics

	Alemtuzumab	AHSCT Cy/ATG ^a	AHSCT BEAM/ATG ^a	Ref. DMTs (unmatched) ^b	Ref. DMTs (matched) ^c
No.	132	94	45	8,356	2,486
Place of birth	0 (0.00)	0 (0.00)	0 (0.00)	4 (0.00)	0 (0.00)
Education level	1 (0.01)	1 (0.01)	1 (0.02)	149 (0.02)	65 (0.03)
Hospital days	4 (0.03)	3 (0.03)	0 (0.00)	360 (0.04)	165 (0.07)
Sick leave	1 (0.01)	0 (0.00)	1 (0.02)	56 (0.01)	29 (0.01)
Disability pension	1 (0.01)	0 (0.00)	1 (0.02)	56 (0.01)	29 (0.01)
MS type	0 (0.00)	0 (0.00)	1 (0.02)	82 (0.01)	0 (0.00)
Age at MS onset	4 (0.03)	3 (0.03)	0 (0.00)	601 (0.07)	164 (0.07)
MS duration	4 (0.03)	3 (0.03)	0 (0.00)	601 (0.07)	164 (0.07)
EDSS score	15 (0.11)	24 (0.26)	10 (0.22)	2,903 (0.35)	871 (0.35)
SDMT score	26 (0.20)	75 (0.80)	36 (0.80)	2,437 (0.29)	700 (0.28)
MSIS-29 Physical score	27 (0.20)	76 (0.81)	33 (0.73)	2,357 (0.28)	670 (0.27)
MSIS-29 Psychological score	27 (0.20)	76 (0.81)	33 (0.73)	2,359 (0.28)	673 (0.27)

Abbreviations: AHSCT = Autologous Hematopoietic Stem Cell Transplantation; ATG = anti-thymocyte globulin; BEAM = BCNU, etoposide, cytosine-rabioside, and melphalan; Cy = cyclophosphamide; DMT = disease-modifying therapy; EDSS = Expanded Disability Status Scale; MS = Multiple Sclerosis; MSIS-29 = Multiple Sclerosis Impact Scale; Ref. = reference; SDMT = Symbol Digit Modalities Test.

Number of patients with missing (proportion). Only variables with missing observations are shown; outcome variables had no missing observations.

^a Conditioning regimen: Cy/ATG and BEAM/ATG.

^b Reference noninduction therapy group comprising natalizumab, dimethyl fumarate, rituximab, and fingolimod.

^c The reference group matched 10:1 to the alemtuzumab and AHSCT groups on age, sex, and region.

sex, and region using incidence-density sampling, and individuals were eligible to be selected as referents if at the start of noninduction therapy they had not previously been treated with alemtuzumab or AHSCT. To investigate nonimmediate effects of the therapies, a lag time of 6 months from therapy initiation to when follow-up time started was used for the outcomes: infection, aplastic anemia, thrombocytopenia, and agranulocytosis.

All statistical analyses were done with Python 3.7.4 (Python¹⁰ Software Foundation, Wilmington, DE).

Standard Protocol Approvals, Registrations, and Patient Consents

This study was approved by the Regional Ethical Board of Stockholm (reference 2017/700–31/4).

Data Availability

Data are available on approval from the respective register holders.

Results

We identified 132 alemtuzumab-treated and 139 AHSCT-treated (68% Cy/ATG, 32% BEAM/ATG) patients with mean follow-up of 3.5 and 4.2 years, respectively, in analyses of death, new therapy, and prescription drug–based outcomes and 2.8 and 3.4 years, respectively, for the diagnosis-based

outcomes and cancer. The 2,486 noninduction therapies (36% natalizumab, 29% dimethyl fumarate, 22% rituximab, 13% fingolimod) were matched to the alemtuzumab and AHSCT therapies in a reference group with a mean follow-up of 4.3 and 3.6 years, depending on the outcome.

Patient Characteristics

Patients in the alemtuzumab group were on average 2 years older with a lower proportion of women and a lower level of education compared to the patients in the AHSCT group (table 2). Patients receiving alemtuzumab also had less hospital-admission time, disability pension, sick leave, and autoimmune disease; later onset of MS; shorter disease duration; fewer previous therapies; lower (i.e., better) EDSS and MSIS-29 scores; and higher (i.e., better) SDMT scores. Within the AHSCT group, patients receiving Cy/ATG were slightly younger; were more often female and with the RRMS type; had lower education, less hospital admission time, less sick leave, and less nonthyroid autoimmune disease, and lower age at MS onset; more often had a single previous therapy; and had lower EDSS and MSIS-29 scores compared to the patients receiving BEAM/ATG. There were major regional differences in therapy choice, with most regions showing a preference for either alemtuzumab or AHSCT and for 1 of the 2 conditioning regimens used for AHSCT (table 2). Before matching, patients starting reference treatments were 5 to 7 years older than the patients in the alemtuzumab and AHSCT groups, had less hospital days and sick leave, and

Table 4 Main Outcomes After Therapy Start

Outcome/Group	At Risk	Events	Person-Years	IR/1,000 Person-years
Death				
Alemtuzumab	132	4	466	8.6 (2.3–22.0)
AHSCT	139	1	583	1.7 (0.0–9.6)
Cy/ATG ^a	94	0	321	0.0 (0.0–11.5)
BEAM/ATG ^a	45	1	263	3.8 (0.1–21.2)
Reference DMTs ^b	2,486	7	10,710	0.7 (0.3–1.3)
Thyroid disease				
Alemtuzumab	125	32	293	109.1 (74.6–154.0)
AHSCT	134	14	417	33.6 (18.4–56.4)
Cy/ATG ^a	91	7	228	30.7 (12.3–63.2)
BEAM/ATG ^a	43	7	189	37.1 (14.9–76.5)
Reference DMTs ^b	2,398	45	8,523	5.3 (3.9–7.1)
Thyroid hormone				
Alemtuzumab	132	50	367	136.4 (101.3–179.9)
AHSCT	139	18	511	35.2 (20.9–55.6)
Cy/ATG ^a	94	10	293	34.2 (16.4–62.8)
BEAM/ATG ^a	45	8	219	36.6 (15.8–72.1)
Reference DMTs ^b	2,486	106	10,432	10.2 (8.3–12.3)
Nonthyroid autoimmune disease				
Alemtuzumab	121	1	332	3.0 (0.1–16.8)
AHSCT	120	1	385	2.6 (0.1–14.5)
Cy/ATG ^a	87	1	226	4.4 (0.1–24.7)
BEAM/ATG ^a	33	0	159	0.0 (0.0–23.2)
Reference DMTs ^b	2,302	28	8,184	3.4 (2.3–4.9)
Any infection				
Alemtuzumab	132	19	341	55.7 (33.6–87.0)
AHSCT	139	66	240	275.4 (213.0–350.4)
Cy/ATG ^a	94	35	167	209.4 (145.9–291.3)
BEAM/ATG ^a	45	31	73	427.5 (290.5–606.8)
Reference DMTs ^b	2,486	405	7,755	52.2 (47.3–57.6)
Any infection (not immediate)^c				
Alemtuzumab	124	15	284	52.8 (29.5–87.1)
AHSCT	132	35	324	108.0 (75.2–150.1)
Cy/ATG ^a	87	18	169	106.4 (63.0–168.1)
BEAM/ATG ^a	45	17	155	109.7 (63.9–175.6)
Reference DMTs ^b	2,317	349	6,788	51.4 (46.2–57.1)

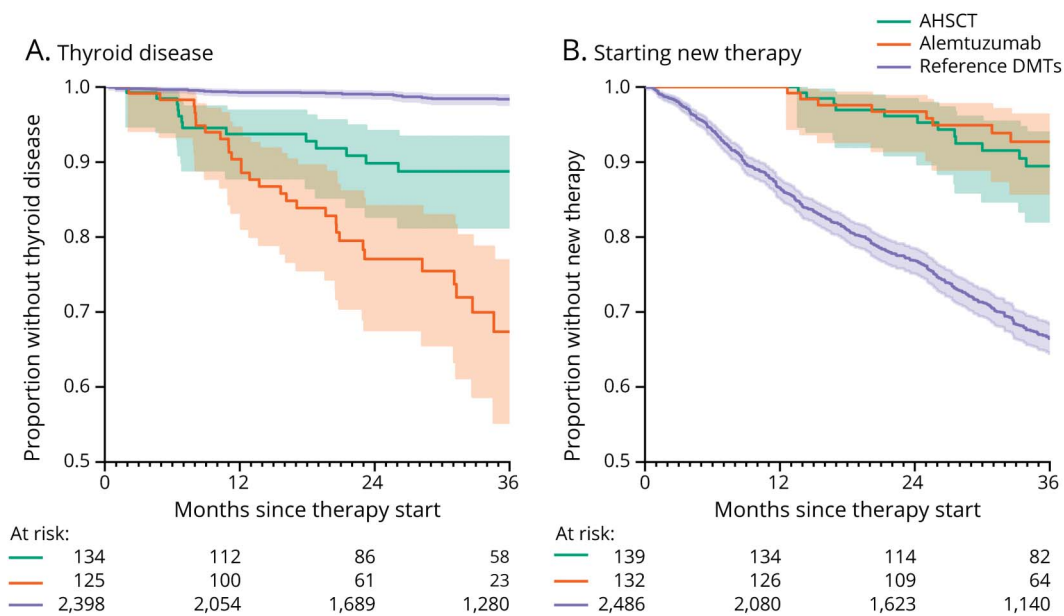
Abbreviations: AHSCT = autologous hematopoietic stem cell transplantation; ATG = anti-thymocyte globulin; BEAM = BCNU, etoposide, cytosine-rabioside, and melphalan; Cy = cyclophosphamide; DMT = disease-modifying therapy; IR = incidence rate.

^a Conditioning regimen: Cy/ATG and BEAM/ATG.

^b Noninduction therapy group comprising natalizumab, dimethyl fumarate, rituximab, and fingolimod, matched 10:1 to the alemtuzumab and AHSCT groups on age, sex, and region.

^c Six-month lag period after therapy initiation before follow-up starts.

Figure 1 Thyroid Disease After Therapy Start and Proportion of Patients Not Starting a New Therapy



Kaplan-Meier plots of (A) proportion of patients without thyroid disease after therapy start and (B) proportion of patients not starting a new therapy. Patients with thyroid disease before therapy start were censored. Reference group comprised the noninduction therapies natalizumab, dimethyl fumarate, rituximab, and fingolimod, matched 10:1 to the alemtuzumab and autologous hematopoietic stem cell transplantation (AHSCT) groups on age, sex, and region. DMT = disease-modifying therapy.

had tried fewer previous therapies. These differences were less obvious in the age-, sex-, and region-matched reference group. Data were missing for some of the baseline variables, and the missingness varied between the treatment groups, but there were no missing observations for any of the outcome variables. Most missing data involved baseline EDSS, SDMT, and MSIS-29 scores, especially for AHSCT-treated patients, among whom 22% to 81% of patients had missing data (table 3).

Mortality

There were 4 deaths recorded in the alemtuzumab group (IR per 1,000 person-years 8.6, 95% CI 2.3–22.0, table 4): 2 suicides, 1 heart attack (1.4 years after therapy start), and 1 cytomegalovirus reactivation with multiorgan failure within 1 month of therapy start. There was 1 death, a suicide, reported in the AHSCT group (BEAM/ATG, >6 years after therapy start), corresponding to an IR of 1.7 (95% CI 0.0–9.6). The mortality rate in the matched reference group was 0.7 (95% CI 0.3–1.3).

Thyroid Disease and Nonthyroid Autoimmune Disease

A first-ever thyroid disease was diagnosed in inpatient or specialized outpatient care in 32 alemtuzumab- and 14 AHSCT-treated patients (IRs per 1,000 person-years 109 [95% CI 75–154] and 34 [95% CI 18–56], respectively, table 4). The corresponding IR for the matched reference group was 5.3 (95% CI 3.9–7.1). A similar pattern was evident for prescriptions of thyroid hormone, which in addition captures

thyroid disease managed in primary care (table 4). Figure 1 (left panel) shows the proportion of patients without a diagnosis of thyroid disease over time from therapy start. First-ever nonthyroid autoimmune disease was rare, with an IR 3.0 (95% CI 0.1–16.8) for alemtuzumab, 2.6 (95% CI 0.1–14.5) for AHSCT, and 3.4 (95% CI 2.3–4.9) for the matched reference (table 4).

Infection

An infection diagnosed in inpatient or specialized outpatient care occurred in 19 alemtuzumab- and 66 AHSCT-treated patients (IR per 1,000 person-years 56 [95% CI 34–87] and 275 [95% CI 213–350], respectively, table 4). The corresponding IR for the matched reference group was 52 (95% CI 47–58). The incidence of infection was highest immediately after AHSCT but dropped to a level closer to the alemtuzumab and reference groups within the first year (figure 2). No clear temporal pattern could be discerned in the alemtuzumab and reference groups. When we assessed the nonimmediate effects of therapy by starting follow-up 6 months after therapy initiation, the IR for infection was instead 53 (95% CI 30–87) for alemtuzumab, 108 (95% CI 75–150) for AHSCT, and 51 (95% CI 46–57) for the matched reference (table 4). The rate of infection differed between the AHSCT conditioning regimens, with an initial higher rate for BEAM/ATG (IR 428, 95% CI 291–607) compared to Cy/ATG (IR 209, 95% CI 146–291). However, this difference disappeared after 6 months of follow-up. The most commonly diagnosed infections close to AHSCT treatment were herpesvirus infections (especially varicella zoster and in the BEAM/ATG group)

Table 5 Secondary Outcomes After Therapy Start

Outcome	Alemtuzumab	AHSCT	Cy/ATG ^a	BEAM/ATG ^a	Reference DMTs ^b
No.	132	139	94	45	2,486
Infection					
Varicella zoster (diagnosis)	3 (8.3)	9 (20.4)	4 (16.6)	5 (24.9)	16 (1.8)
Herpes antivirals	113 (781.0)	123 (1,168.0)	85 (1865.3)	38 (636.1)	345 (34.5)
Systemic antibiotics	81 (312.2)	122 (1,055.3)	81 (1,203.2)	41 (849.0)	1,435 (244.5)
Cancer					
Invasive cancer	2 (5.4)	0 (0.0)	0 (0.0)	0 (0.0)	12 (1.4)
Basal cell carcinoma	0 (0.0)	1 (2.1)	1 (4.0)	0 (0.0)	4 (0.4)
Blood cells					
Aplastic anemia (not immediate)^c	2 (6.5)	3 (7.4)	0 (0.0)	3 (15.1)	20 (2.6)
Thrombocytopenia (not immediate)^c	2 (6.5)	0 (0.0)	0 (0.0)	0 (0.0)	7 (0.9)
Agranulocytosis (not immediate)^c	3 (9.9)	2 (4.9)	1 (4.9)	1 (4.9)	7 (0.9)
Cardiovascular					
Major acute cardiovascular event	0 (0.0)	1 (2.1)	0 (0.0)	1 (4.4)	6 (0.7)
Reproductive organs and fertility					
Female reproductive^d	7 (33.3)	40 (169.0)	25 (189.7)	15 (143.0)	204 (37.8)
Male reproductive^d	0 (0.0)	4 (27.8)	2 (28.3)	2 (27.3)	17 (5.6)
New therapy					
Starting new therapy	11 (25.6)	15 (28.3)	10 (33.9)	5 (21.3)	1,047 (133.8)

Abbreviations: AHSCT = autologous hematopoietic stem cell transplantation; ATG = anti-thymocyte globulin; BEAM = BCNU, etoposide, cytosine-rabinoside, and melphalan; Cy = cyclophosphamid; DMT = disease-modifying therapy. Number of events (incidence rate/1,000 person-years).

^a Conditioning regimen: Cy/ATG and BEAM/ATG.

^b Noninduction therapy group comprising natalizumab, dimethyl fumarate, rituximab, and fingolimod, matched 10:1 to the alemtuzumab and AHSCT groups on age, sex, and region.

^c Six-month lag period after therapy initiation before follow-up starts.

^d Female and male reproductive outcomes only in the female and male populations, respectively.

and bacterial sepsis, followed by a wide variety of both viral and bacterial infections (data not shown). After 6 months, herpes infections were still the most commonly diagnosed infectious event, especially in the BEAM/ATG subgroup. For alemtuzumab, infections were more heterogeneous. Diagnosis of varicella zoster infection had an IR 8.3 for alemtuzumab, 20.4 for AHSCT (Cy/ATG 16.6, BEAM/ATG 24.9), and 1.8 for the matched reference (table 5). Systemic antibiotics and herpes antivirals were given to almost all patients after AHSCT and to a majority of patients after alemtuzumab (table 5). No cases of progressive multifocal leukoencephalopathy were found.

Other Safety Outcomes

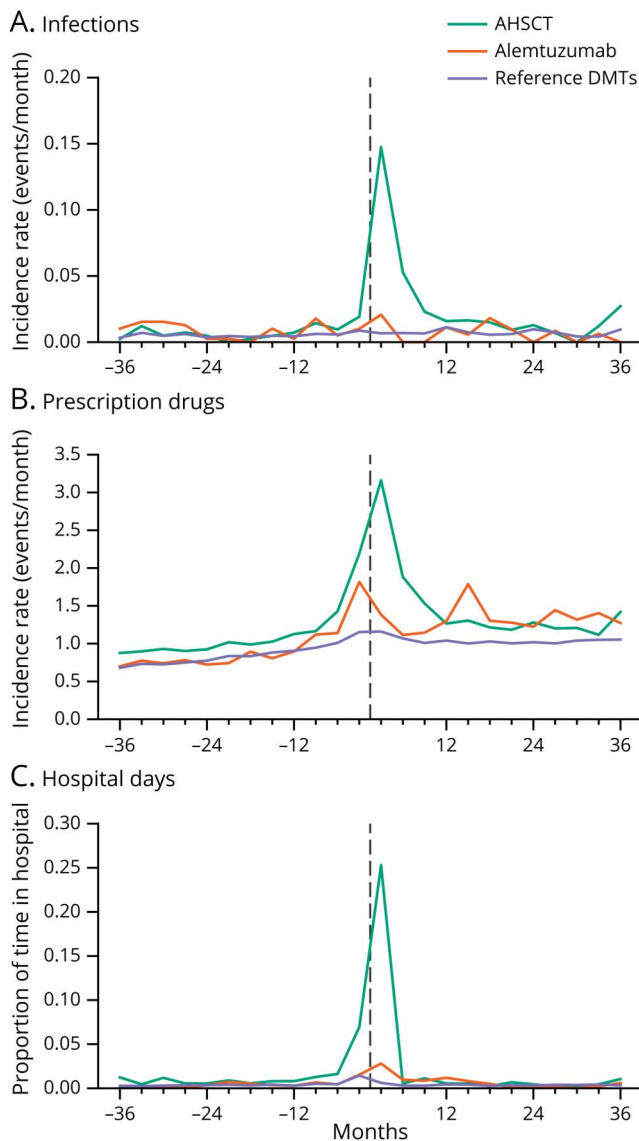
Two cases of invasive cancer were recorded in the alemtuzumab group (IR per 1,000 person-years 5.4, breast and urinary bladder cancer, respectively) compared to no cancers in the AHSCT group and an IR of 1.4 in the matched reference (table 5). One case of basal cell carcinoma was reported in the

AHSCT group (table 5). Blood cell disorders (aplastic anemia, thrombocytopenia, and agranulocytosis) were rare when follow-up was started after a lag time of 6 months from therapy initiation (table 5). There were no major acute cardiovascular events in the alemtuzumab group and 1 event in the AHSCT group (a cerebral infarction) (table 5). Diagnoses relating to the reproductive organs and fertility were common with AHSCT, especially in women (IR 169) and in the Cy/ATG subgroup (IR 190), compared to the other groups (IR 33–38) (table 5).

Starting New Therapy

The IRs per 1,000 person-years for starting a new MS DMT were 26 (95% CI 13–46) for alemtuzumab and 28 (95% CI 16–47) for AHSCT, which were substantially lower than for the matched reference group (IR 134, 95% CI = 126–142) (table 5). Patients with AHSCT having received the Cy/ATG conditioning regimen had a higher rate of starting a new therapy compared to those receiving BEAM/ATG. Figure 1

Figure 2 Infections, Drug Prescriptions, and Time Spent in Inpatient Care Before and After Therapy Start



Incidence rate (events per month) of (A) diagnosed infection and (B) prescription of drugs and (C) the proportion of time spent in inpatient care in 3-month intervals 3 years before and after therapy start. Patients were not censored at an event and continued to contribute person-time. Reference group comprised the noninduction therapies natalizumab, dimethyl fumarate, rituximab, and fingolimod, matched 10:1 to the alemtuzumab and autologous hematopoietic stem cell transplantation (AHSCT) groups on age, sex, and region. DMT = disease-modifying therapy.

(right panel) shows the proportion of patients without new therapy over time from therapy start.

Prescription Drugs and Health Care

Drug prescriptions increased slightly over time in all groups, with peaks around therapy start (highest for AHSCT) and the second dosing of alemtuzumab after 1 year (figure 2). AHSCT was also associated with considerable in-hospital care, corresponding to 25% of all days in the first 3 months after therapy start (figure 2). This pattern was less evident for alemtuzumab and the noninduction therapies, and hospitalizations stabilized

at <1% of the total time in all groups after the first 3 months of therapy.

Discussion

In this observational study using high-quality data from clinical practice recorded in Sweden's nationwide health registers, we investigated safety outcomes for all patients with MS in Sweden treated with alemtuzumab and AHSCT compared to a matched reference group receiving noninduction MS DMTs. While the effectiveness of both alemtuzumab and AHSCT is considered high, safety concerns have limited their use, and studies comparing safety outcomes across therapeutic options have so far been rare. Our main findings were a higher incidence of thyroid disease with alemtuzumab and, to a lesser extent, with AHSCT, a higher incidence of infection with AHSCT, and a low incidence of nonthyroid autoimmune disease for both therapies.

A major concern with alemtuzumab treatment has been an increased risk of secondary autoimmune disease, in particular thyroid disease and immune-mediated thrombocytopenia.^{2,11,12} We report here a higher incidence of thyroid disease after treatment with alemtuzumab than previously seen in the clinical trials^{2,11,12} and in line with recent observational data.¹³ Notably, preexisting autoimmune conditions represented an exclusion criterion in the Comparison of Alemtuzumab and Rebif® Efficacy in Multiple Sclerosis (CARE-MS) trials.^{2,11} We further found a higher incidence of thrombocytopenia after alemtuzumab compared to the matched reference group, similar to what was found in the clinical trials.^{2,11,12} The incidence of first-ever nonthyroid autoimmunity with alemtuzumab was similar to that in the reference and AHSCT groups. Unfortunately, the groups were too small to analyze whether preexisting or posttreatment emerging thyroid autoimmunity was associated with a higher incidence of nonthyroid autoimmune disease after treatment. No cases of autoimmune hepatitis or hemophagocytic lymphohistiocytosis were recorded. The incidence of diagnosed infection in the alemtuzumab group was similar to that in the reference group, but the use of antibiotics and especially antivirals was higher after alemtuzumab, likely reflecting an actual or perceived increased infection risk that is managed prophylactically. One of the 4 deaths in the alemtuzumab group was directly related to the alemtuzumab treatment, a case of cytomegalovirus reactivation with multiple organ failure occurring within 1 month of the first treatment cycle. For the remaining 3 cases, the relation to alemtuzumab was uncertain.

A range of different treatment-related adverse events have been reported for AHSCT, of which treatment-related mortality is the most severe.³ In our study, only 1 death occurred after AHSCT during the observation period, a suicide 6 years after therapy start. The mortality rate for AHSCT was similar to that of the matched reference group and much lower than in most previous reports.³ This may be explained in part by the type of ablative conditioning used because less aggressive regimens have become more common. In this cohort, Cy/ATG had been used in 68%

and BEAM/ATG in 32% of the patients undergoing AHSCT, and there were some differences in the baseline characteristics of these subgroups (table 2). A diagnosis of infection was the most common adverse event with AHSCT. The incidence was highest immediately after therapy start but remained higher than for both the alemtuzumab and the matched reference groups after 6 months from therapy start. The incidence of infection was higher close to BEAM/ATG conditioning compared to Cy/ATG but dropped to similar levels after 6 months. This difference between the conditioning regimens should be interpreted cautiously because routines for infection prophylaxis may have differed. According to previous studies, the infection risk in the reference group varies depending on type of DMT, with rituximab (22% of our reference group) having the highest risk of hospitalized infections.¹⁴ The incidence of thyroid disease in the AHSCT group was higher than in the matched reference group but lower than in the alemtuzumab group. Disorders relating to the reproductive organs and fertility were common in the AHSCT group, especially in women and in those having received Cy/ATG conditioning. The Cy/ATG subgroup was also more likely to start a new therapy compared to the BEAM/ATG subgroup.

The main strengths of this study are the use of national health registers with mandatory reporting and virtually complete coverage, together with the Swedish MS register with its high-quality data on treatment episodes and the availability of a large reference group of noninduction therapies. Although the data were of good overall quality, there was significant missingness in the rating scales of disease severity around treatment start, which was distributed unevenly across therapies. However, there were no missing observations for any of the outcome variables, and the missingness affected mainly the ability to perform more exact matching on disease characteristics. We also had no information on visits and diagnoses in general-practice outpatient care, and it is therefore likely that the incidences reported for the diagnosis-based outcomes are underestimated. This is a concern mainly for milder adverse events managed in primary care because more serious illness will be treated in inpatient or specialized outpatient care for which data were available. Because the follow-up ranged between 3 and 4 years, it was not possible to detect longer-term adverse events, which is especially important to consider when interpreting the incidence of cancer and serious late-onset autoimmune events. Additional limitations include potential channeling to therapy and surveillance bias, making direct comparisons between the groups more difficult. However, the regional preference and experience of treatment with either alemtuzumab or AHSCT seemed to be the decisive factor explaining the difference in treatment choice (table 2). The channeling to therapy effect would therefore be strongest in comparisons to the noninduction therapy reference group, for which matching was performed to mitigate this issue. It is likely that residual bias still exists in this comparison because the matching did not involve any MS-specific covariates and it is well accepted in the clinic that alemtuzumab and AHSCT are generally used to treat more aggressive disease, normally requiring breakthrough on previous therapies (as can be seen in

the number of previous therapies in table 2). The difference in aggressiveness of MS would be more important if we were to investigate effectiveness outcomes, but the higher use of previous MS therapies could potentially also affect safety outcomes by a carryover effect, in which a previous therapy is actually causing the events that we find. However, because the majority of previous therapies are those in the reference group, any effect that could carry over to the alemtuzumab and AHSCT groups would also be seen in the reference group. A possible source of surveillance bias was that the patients undergoing AHSCT will generally be monitored more closely during and in the months after conditioning, often in the hospital, compared to those receiving alemtuzumab or the noninduction therapies. On the other hand, alemtuzumab-treated patients are followed up more carefully with blood and urine tests. These differences also complicate the severity assessment of infections, especially around therapy start for AHSCT because hospitalization occurs regardless. In addition, prophylactic antibiotics and antivirals are recommended for 6 to 12 months after AHSCT and antivirals for 1 month after alemtuzumab infusion, limiting the use of these as indicators of infectious events and potentially altering the comparison to the reference group for which there are no such recommendations. Finally, the preference of conditioning in the AHSCT group has changed over time, with a sharp increase of Cy/ATG in 2014 (data not shown). Because recommendations and guidelines for AHSCT treatment have likely also changed over the years, comparisons between the conditioning subgroups should be made with caution. Studies focused specifically on comparing these conditioning regimens are needed to explore any differences further.

Despite the descriptive nature of this study, the differences in incidence of thyroid disease and infection between the groups were great enough to allow a comparative interpretation even in the absence of confounder adjustment. There were differences in baseline characteristics between the groups, but they were mostly minor, and it is unlikely that confounding alone could cause the sharp increase in incidence that occurred directly after patients received treatment. The size of the differences and the clear temporal relationship with therapy start make a causal interpretation plausible.

A third induction-type therapy, cladribine, was approved for MS in 2017, but because it is so new, there were not enough treated patients to include it in our analyses. Future studies are needed to investigate how cladribine compares to alemtuzumab and AHSCT.

Collectively, in this study of 132 alemtuzumab- and 139 AHSCT-treated patients, we confirm the previously reported increased incidence of thyroid disease for alemtuzumab and, to a lesser extent, also for AHSCT and found a higher incidence of infection for AHSCT (highest for BEAM/ATG) compared to both the alemtuzumab group and the matched noninduction therapy reference group. The incidence of first-ever nonthyroid autoimmune events was similar between the groups. Disorders relating to reproductive organs and fertility

were common in the AH SCT group, especially in women. Other adverse events were rare but still more common in the alemtuzumab and AH SCT groups than in the matched reference group. Overall mortality was slightly higher in the alemtuzumab group, but only 1 of the 4 deaths was clearly linked to the treatment.

Study Funding

Research reported in this publication was funded through a Patient-Centered Outcomes Research Institute (PCORI) award (MS-1511-33196). The statements presented in this publication are solely the responsibility of the authors and do not necessarily represent the views of the PCORI, its Board of Governors, or the Methodology Committee. Additional support was received from the Swedish Society for Medicine (SLS-726341) and the Swedish Society for Medical Research (J.B), the Swedish Foundation for MS Research (T.F.), and the Swedish Research Council (T.F. and F.P.).

Disclosure

Commercial entities relevant for potential conflicts of interest are the following: Sanofi Genzyme (alemtuzumab/Lemtrada), Novartis (fingolimod/Gilenya), Biogen (natalizumab/Tysabri and dimethyl fumarate/Tecfidera), and Roche (rituximab/Mabthera). P. Alping, J. Burman, and T. Frisell report no conflicts of interest. J. Lycke has received travel support and/or lecture honoraria and has served on scientific advisory boards for Biogen, Novartis, and Sanofi Genzyme and has received unconditional research grants from Biogen and Novartis. F. Piehl has received unrestricted research grants from Genzyme and Novartis. Go to Neurology.org/N for full disclosures.

Publication History

Received by *Neurology* August 19, 2020. Accepted in final form December 7, 2020.

Appendix Authors

Name	Location	Contribution
Peter Alping, MD	Karolinska Institutet, Stockholm, Sweden	Study concept and design, data acquisition and interpretation, statistical analysis, drafting and revising of the manuscript

Appendix (continued)

Name	Location	Contribution
Joachim Burman, MD	Uppsala University, Sweden	Study concept and design, data acquisition and interpretation, drafting and revising of the manuscript
Jan Lycke, MD	University of Gothenburg, Sweden	Study concept and design, data acquisition and interpretation, drafting and revising of the manuscript
Thomas Frisell, PhD	Karolinska Institutet, Stockholm, Sweden	Study concept and design, data acquisition and interpretation, drafting and revising of the manuscript
Fredrik Piehl, MD	Stockholm Health Services and Karolinska Institutet, Stockholm, Sweden	Study concept and design, data acquisition and interpretation, drafting and revising of the manuscript

References

- Fassas A, Anagnostopoulos A, Kazis A, et al. Peripheral blood stem cell transplantation in the treatment of progressive multiple sclerosis: first results of a pilot study. *Bone Marrow Transpl* 1997;20:631-638.
- Coles AJ, Twyman CL, Arnold DL, et al. Alemtuzumab for patients with relapsing multiple sclerosis after disease-modifying therapy: a randomised controlled phase 3 trial. *Lancet* 2012;380:1829-1839.
- Muraro PA, Martin R, Mancardi GL, Nicholas R, Sormani MP, Saccardi R. Autologous haematopoietic stem cell transplantation for treatment of multiple sclerosis. *Nat Rev Neurol* 2017;13:391-405.
- Hillert J. Neuroreg.Se: Swedish Multiple Sclerosis Register. Available at: neuroreg.se/. Accessed July 1, 2020.
- Alping P, Piehl F, Langer-Gould A, Frisell T; COMBAT-MS Study Group. Validation of the Swedish Multiple Sclerosis Register: further improving a resource for pharmacoepidemiologic evaluations. *Epidemiology* 2019;30:230-233.
- Hillert J, Stawiarz L. The Swedish MS Registry clinical support tool and scientific resource. *Acta Neurol Scand* 2015;132:11-19.
- Ludvigsson JF, Andersson E, Ekbom A, et al. External review and validation of the Swedish National Inpatient Register. *BMC Public Health* 2011;11:450.
- Wettermark B, Hammar N, Fored CM, et al. The new Swedish Prescribed Drug Register: opportunities for pharmacoepidemiological research and experience from the first six months. *Pharmacoepidemiol Drug Saf* 2007;16:726-735.
- Socialstyrelsen. Swedish Cancer Registry. <https://www.socialstyrelsen.se/en/statistics-and-data/registers/register-information/swedish-cancer-register/>. Accessed July 1, 2020.
- Python. A Language and Environment for Statistical Computing. Delaware: Python Software Foundation; 2018.
- Cohen JA, Coles AJ, Arnold DL, et al. Alemtuzumab versus interferon beta 1a as first-line treatment for patients with relapsing-remitting multiple sclerosis: a randomised controlled phase 3 trial. *Lancet* 2012;380:1819-1828.
- CAMMS223 Trial Investigators, Coles AJ, Compston DAS, et al. Alemtuzumab vs. interferon beta-1a in early multiple sclerosis. *N Engl J Med* 2008;359:1786-1801.
- Scappaticcio L, Castellana M, Virili C, et al. Alemtuzumab-induced thyroid events in multiple sclerosis: a systematic review and meta-analysis. *J Endocrinol Invest* 2020;43:219-229.
- Luna G, Alping P, Burman J, et al. Infection risks among patients with multiple sclerosis treated with fingolimod, natalizumab, rituximab, and injectable therapies. *JAMA Neurol* 2020;77:184-191.

Neurology®

Safety of Alemtuzumab and Autologous Hematopoietic Stem Cell Transplantation Compared to Noninduction Therapies for Multiple Sclerosis

Peter Alping, Joachim Burman, Jan Lycke, et al.

Neurology 2021;96:e1574-e1584 Published Online before print January 29, 2021

DOI 10.1212/WNL.0000000000011545

This information is current as of January 29, 2021

Updated Information & Services	including high resolution figures, can be found at: http://n.neurology.org/content/96/11/e1574.full
References	This article cites 11 articles, 0 of which you can access for free at: http://n.neurology.org/content/96/11/e1574.full#ref-list-1
Subspecialty Collections	This article, along with others on similar topics, appears in the following collection(s): Cohort studies http://n.neurology.org/cgi/collection/cohort_studies Multiple sclerosis http://n.neurology.org/cgi/collection/multiple_sclerosis
Permissions & Licensing	Information about reproducing this article in parts (figures, tables) or in its entirety can be found online at: http://www.neurology.org/about/about_the_journal#permissions
Reprints	Information about ordering reprints can be found online: http://n.neurology.org/subscribers/advertise

Neurology® is the official journal of the American Academy of Neurology. Published continuously since 1951, it is now a weekly with 48 issues per year. Copyright © 2021 The Author(s). Published by Wolters Kluwer Health, Inc. on behalf of the American Academy of Neurology. All rights reserved. Print ISSN: 0028-3878. Online ISSN: 1526-632X.

